

# OUR PRODUCTS

## Sticker Label (Pressure-sensitive Label)



➤ We have several types of paper and plastic sticker material, which can manufacture to match almost any type of customer's requirement and application.

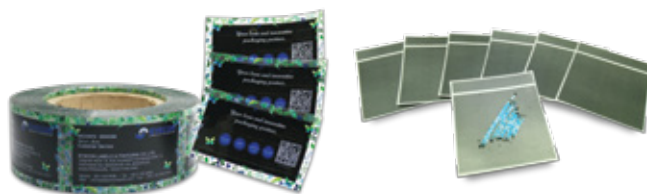
## Popup Label and Multi-layer Label



➤ Pop-up Sticker is a partial coating adhesive sticker, used to stick on top of the product to gain consumer attention during selecting product on the shelf.

➤ Multi-layer Label is a sticker label used to extend product's information to the back side. It can be reseal cleanly after peeling the face.

## Specialty Printing and Security Label



➤ Because of modern printing facilities and techniques we have, we can manufacture various types of specialty label ie. security label, lucky drawn label, 2 sides printing label, etc.

## Shrink Sleeve Label



➤ Shrink Sleeve is a type of label that cover and conforms to the shape of containers when getting heated.

## Inmold Label and Heat Transfer Label



➤ Inmold Label and Heat Transfer Label, both labeling techniques are both designed specifically for plastic product's decoration. The differences are as following.

Inmold Label is used during plastic blow molding and injection molding processes.

Heat Transfer Label is the heat-sensitive material used to transfer printed design to plastic products.

## Variable Data / Multi-design Labels & Packaging



➤ With digital printing solutions combined with conventional flexo, screen, and gravure printing; we can offer various types of printing application; such as variable data printing, multi-design printing; in which can form into difference types of label and packaging format.

## Autopack Roll (Stock Roll)



➤ Autopack Roll is the printed stock roll that manufactured for automatic form-fill-seal applications. Difference types of material structure can be chosen to make it most suitable with customer's product.

## Center Seal Pouch and Side Gusset Pouch



➤ Center Seal Pouch has been popularly used among snack, food and beverage products, e.g. tea and coffee. Air valve insertion is also virtually a must for coffee packaging.

## Spout Pouch and Sachet Pouch



➤ Spout Pouch and Sachet Pouch from us can be use with food, cosmetics, and other chemical products.

## 3Side Seal Pouch and Zipper Pouch



➤ 3Side Seal Pouch offered by us is designed and developed for various types of application, e.g. vacuum packing. Besides various material structures offered by us, the pouch can also add options according to customer needs, e.g. hanging hole, zip lock, etc.

## Stand Pouch and Zipper Stand Pouch



➤ Stand Pouch is a gusset bottom pouch which make it able to stand on the shelf after filled and packed. It is a cost effective choice over tin can and glass bottle. It is also light weight and space saving, which make it easy and cost effective to deliver.

## Single Layer Pouch and Multi-pack Packaging



➤ Multi-pack Packaging offered by us is able to produce in various types of form. The material that could be use, for example; LLDPE, PP, PVC, PET, etc.